

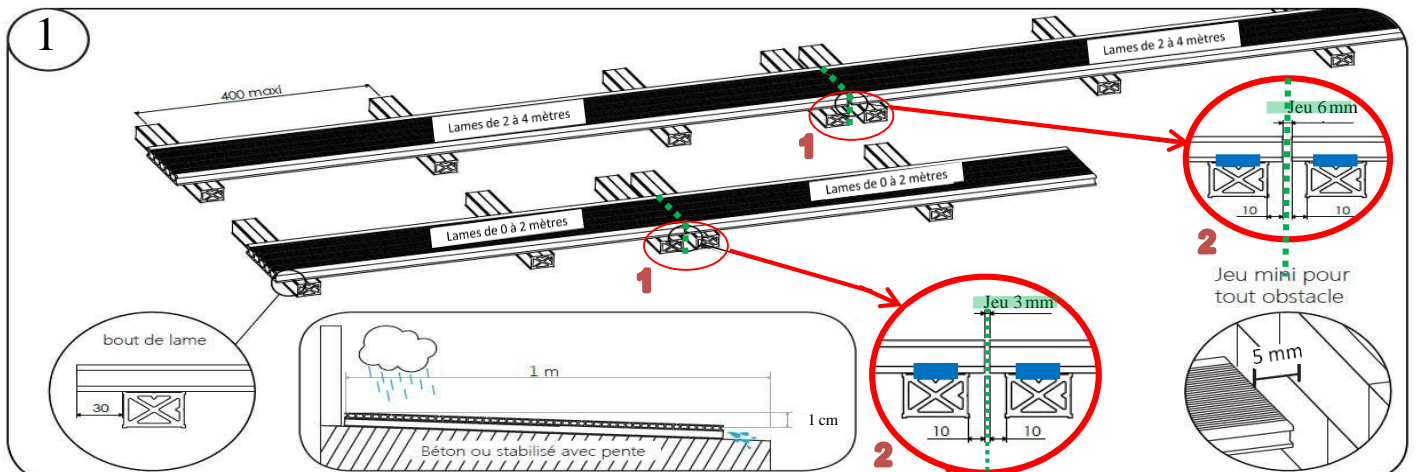
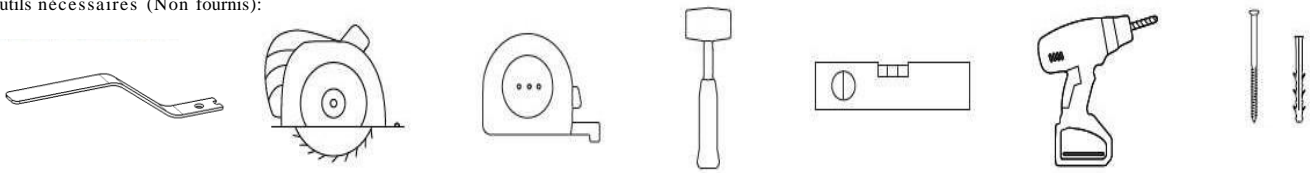
JUST aposé

NOTICE DE MONTAGE Pose de la terrasse

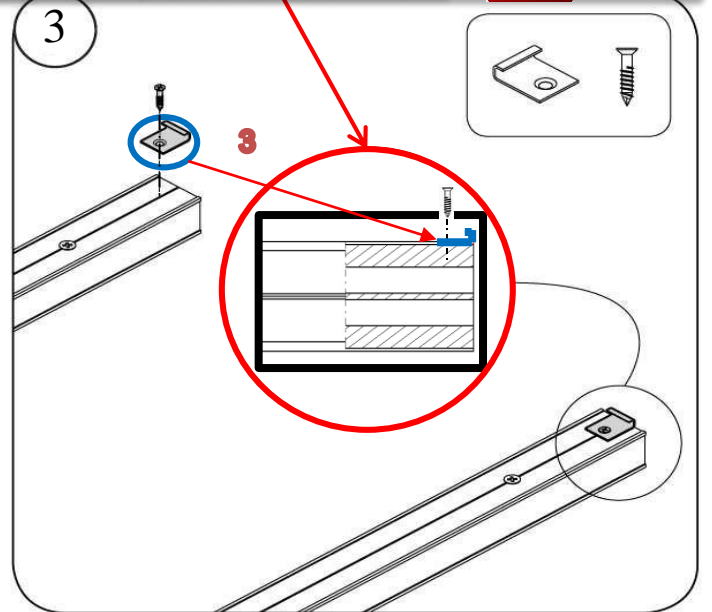
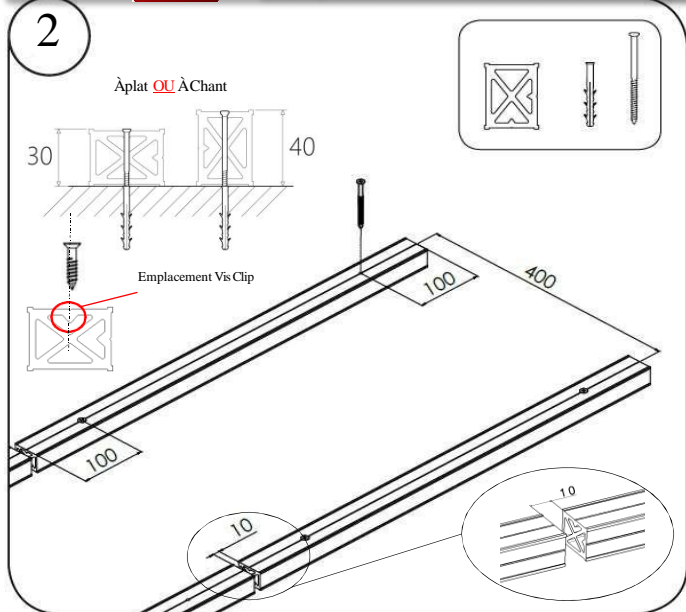
Composants :

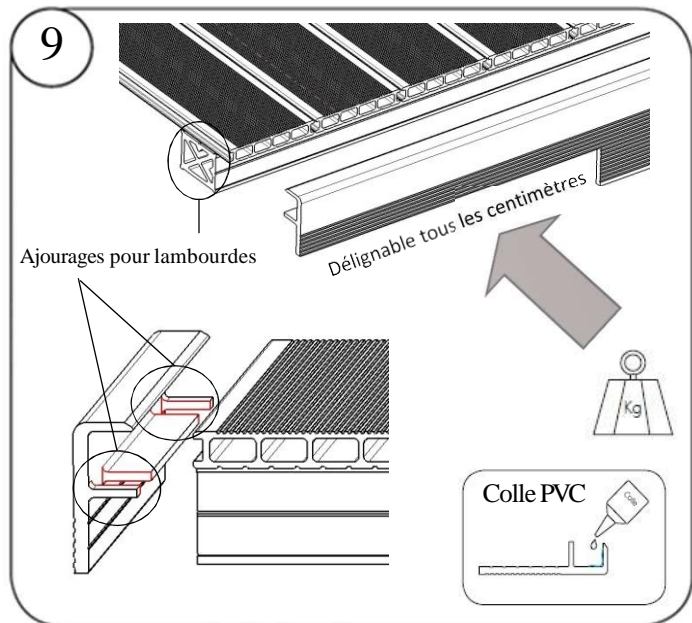
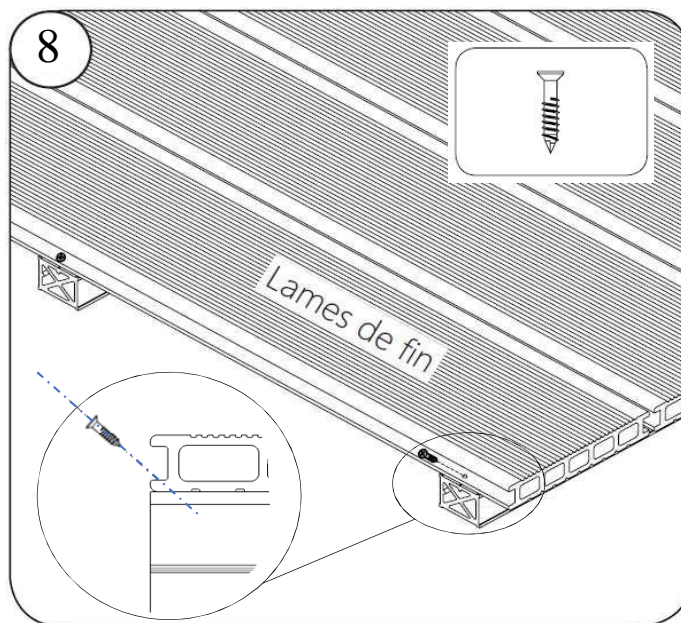
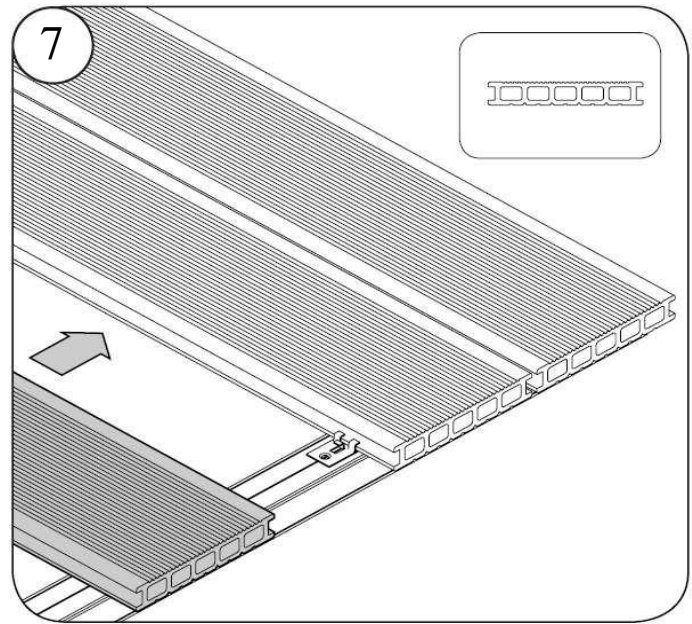
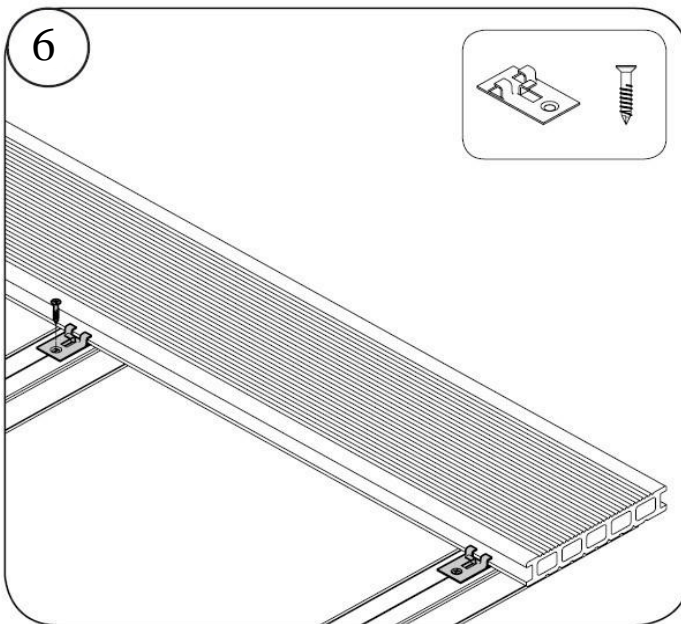
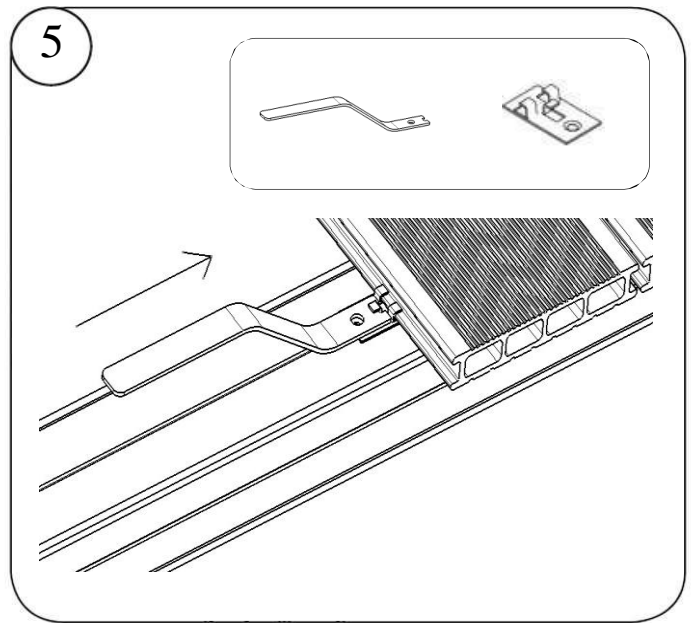
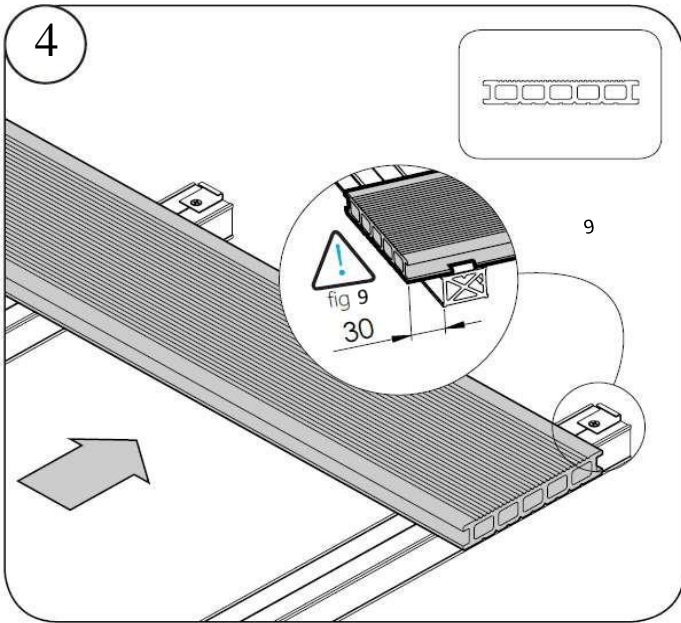


Outils nécessaires (Non fournis):



Entre 2 lames, poser 1 lambourde avec un clip à chaque extrémité de lame.
Bien poser 1 lambourde avec un clip à l'extrémité près du mur ou en finition.





Garantie constructeur : Dans les conditions d'utilisation prévues par le fabricant.